

Babele [Babel], 1990

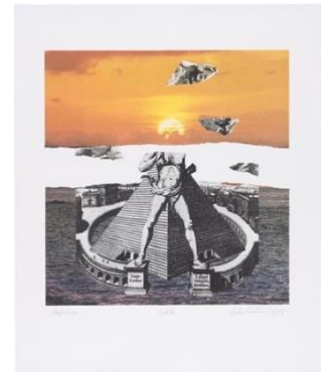
Lithograph

80 x 60 cm

Edition of 150 in Arabic numerals plus 30 in Roman numerals

Marco Noire Editore for U.P.S.E., Turin

Scattered against the backdrop of a seascape at dusk, divided into two parts, are the torn fragments of a reproduction of the Colossus of Rhodes, a huge statute of Helios, god of the sun, located in the Greek port of Rhodes in the 3rd century BC, and considered one of the Seven Wonders of the World. In the upper part the glare of the sun replaces the deity's missing face. In the lower half the figure of the Colossus is joined with an image of an Egyptian pyramide. Both images come from the book by Athanasius Kircher titled *Turris Babel* (Amsterdam, 1679). The tearing of the seascape into two parts, divided by an interval at the centre, outlines a clear separation between sky and earth, nature and architecture, and at the same time conveys the idea of the generating force in the union of opposites.



Bibliographical references

Impressions graphiques. L'opera grafica 1967-1992 di Giulio Paolini (Turin: Marco Noire Editore, 1992), cat. no. 72.

Entry by Bettina Della Casa