

Traits d'union, 2000

Lithograph

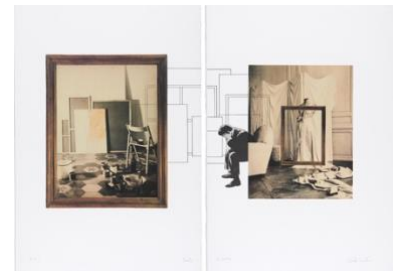
Two parts 100 x 70 cm each, overall dimensions when displayed 100 x 142 cm

Edition of 100 in Arabic numerals, 10 in Roman numerals, plus 5 Hors Commerce (H.C.)

Marco Noire Editore for Galleria Christian Stein, Milan

The first of the two sheets represents the work by Paolini *Fleischfarbe* (1965), in which a primed canvas, propped up against several reversed canvases

in the artist's studio, depicts the flesh colour drawing of a female nude. The second sheet instead portrays a dressmaker's shop, with a mannequin emphasized by a frame similar to that of the frame reproduced in the other sheet. A male figure with his head between his hands (from the painting *Beethoven*, 1900, by Lionello Balestrieri) can be seen up against the image of the dressmaker's shop, as if seated on the sofa reproduced in the photograph. Moreover, each sheet bears a drawing of canvases, heaped one on top of the other, which in the wall installation of the print act as "*traits d'union*" – as the title suggests – generating a presumed continuity of the image. The figure absorbed in his thoughts – a stand-in for the author – thus appears to be in an artist's studio, seen as the "theatre of the eventuality of a painting coming into being",¹ in the artist's own words.



¹ G. Paolini in conversation with B. Della Casa, 20 March 2021.

Bibliographical references

Impressions graphiques. L'opera grafica 1967-1992 di Giulio Paolini (Turin: Marco Noire Editore, 1992), 1996-2005 supplement, cat. no. 105.

Entry by Bettina Della Casa